

後不孝方幸年見之克有成功而不應...
用頁

追由杉...
...
...

Chinese Contemporary Art

66 WORKS FROM AN IMPORTANT GERMAN COLLECTION

中国当代艺术

源自德国重要收藏的66幅作品

GALERIE RITTHALER

Chinese Contemporary Art

66 WORKS FROM AN IMPORTANT GERMAN COLLECTION

中国当代艺术
源自德国重要收藏的66幅作品

Front cover: Liang Quan, p. 89, (Detail)
封面：梁铨，第页，89（细节）

10

CHEN XIANGXUN

陈向迅

22

SUN LIANG

孙良

32

LIANG QUAN

梁铨

42

XU LONGSEN

徐龙森

52

LI SHAN

李山

62

GU LIMING

顾黎明

68

HAN LIKUN

韩黎坤

77

CATALOG OF ALL 66 WORKS

66幅作品目录



Sun Liang, p. 85 (Detail)
孙良 第 页, 85 (细节)

Chinese Contemporary Art

A very fine selection of 66 early works by Chinese artists Sun Liang, Li Shan, Gu Liming, Liang Quan, Xu Longsen and Chen Xiangxun, will be exclusively offered for sale now. These works belong to a large private German collection of Chinese Contemporary Art which focused on works from the 1980s and 1990s. They are representing a pioneering period which is actually getting re-discovered by collectors and museums.

Since the turn of the Century Contemporary Chinese art market has been expanding enormously and Chinese artists are filling galleries, auction houses, and museum shows all over the world. In view of this development this amazing private German collection has become a veritable treasure. This is because of the collection's focus on this special period and on early works of Contemporary masters which are rare to find. The works stylistically stand out from the mainstream variations of Political Pop Art and Cynical Realism which had been flooding the market during the past decade.

Pioneering Artists

The collection stages the early phase of Chinese contemporary art during the years from 1973 to 1992. In the aspect of skills, the paintings in Chinese ink and wash, oil, gouache, watercolors and / or collages are documenting a constant dialogue between Chinese and Western topics and techniques. Actually, these works by contemporary Chinese artists cannot be simply called "Chinese art", nor can they be classified by Western art history terms. The most appropriate and commonly used term today is "experimental art".

One of the outstanding experimental artists is Sun Liang. In his early works Sun Liang experimented with ink painting as well as with oil painting. He started with landscapes and rural scenes, followed by pictures of blossoms, plants, animals and human figures, all painted in Sun's own powerful language. His expressive oil painting "Nightmare 1" dating back to 1987 belongs to the category of semi-narration.

Explicitly influenced by Western arts was Li Shan who preferred topics like bays, ships, towns and rural scenes, or Gu Liming with his "Temptation in Red" and other female nude painting.

Liang Quan developed an abstract naturalism which derives from Chinese traditional art. His early collages and watercolors represented in this collection are vivid and colorful but already show the poetry of his present sheer and almost blank works.

Even though many artists in this collection break with traditional paradigm and old-school masters of painting, they also still deal with the landscape theme, which is a typical subject of the traditional Chinese painting and keep hold of traditional xuan paper and Chinese ink and brush. Also following traditional principles of composition Xu Longsen's landscape pictures are dominated by the Taoist concept of yin-yang (or emptiness-fullness) and invite the contemplator to a visual wandering through natural sceneries. Others like Chen Xiangxun follow the principle of expressive xieyi painting, by ignoring proportion and perspective. Chen paints with strong ink strokes and sometimes the landscapes in his paintings appear as a wilderness without a sky. For hundreds of years these two important painting principles led to artistic freedom and creativity.

All works of art in the collection are early works by artists who shaped decisively the development of painting in China during the last quarter of the twentieth century. In quest of persuasive creativity, originality, individuality, and identity, the artists had their formative years. Nowadays their artworks are shown on major public exhibitions both in China and abroad. As a consequence the works of Chinese experimental art with the evidence of national traits have long conquered the international art markets.

For prices, full lists and details please contact:

GALERIE RITTHALER
Mr. Albert Ritthaler
Bartelsstrasse 33
20357 Hamburg / Germany
+49 40 45 03 73 50
info@ritthaler-galerie.de
www.ritthaler-galerie.de

源自重要德国收藏的中国当代艺术

中国艺术家孙良，李山，顾黎明，梁铨，韩黎坤，徐龙森和陈向迅早期66幅作品的精选收藏现在开始独家销售。该收藏属于由德国收藏家收藏的中国当代艺术品的私家珍藏。作品均创作于1980年至1990年代，它们代表了先锋时期作品的风格，该时期的作品现在再度引起收藏者和博物馆的重视。

自上世纪末，本世纪初，中国当代艺术市场有了很大的发展。世界各大画廊，拍卖行及博物馆都在展览或销售中国艺术家的作品。伴随着这种发展，该德国收藏家的私人收藏也成为了无价之宝。其原因在于该收藏侧重于这一特殊时期，而且这些先锋艺术家的早期作品现在也是罕见的。这些作品从风格上代表了不同于近十年充斥着整个主流市场的政治波普和玩世现实主义。

先锋艺术家

该收藏展现了中国当代艺术从1973年到1992年的早期风格。从绘画技巧来看，这些作品通过中国水墨，油墨，水粉，水彩和/或拼贴，记录了中西绘画在主题和技巧方面长期的对话活动。实际上，这些中国当代艺术家的作品不可以简单称之为“中国艺术”，也不可以归为西方艺术的某一个历史时期。当今最贴切和最经常被用到的表述是“实验艺术”。

其中一位杰出的实验艺术家是孙良。孙良的早期实验作品是水墨画和油画。他起初主要展现风景和田园风光，之后是花丛，植物，动物和人物。所有作品均体现了孙先生自己的特有力量的艺术语言。他著名的油画作品《梦魇1》，创作于1987年，属于半叙述的风格。

明显受到西方艺术影响的画家是李山和顾黎明。李山早期的绘画主题主要是海湾，轮船，城市和田园风光。顾黎明的代表作品“红色诱惑”和其他女性裸体绘画。

梁铨发展了一种源自中国传统艺术的抽象自然主义风格。该收藏中他的具有代表性的拼贴画和水彩画是鲜艳的，五彩缤纷的，但也表现了他当今作品柔和且无色的特点。

韩黎坤受到了前历史壁画的启发。他著名的石版画系列对于前历史壁画进行了超现实主义的叙述。但色彩的运用却与前历史壁画有了很大的反差，主要运用了自由解释的色彩。通过运用拼贴画技巧，韩达到了抽象画的另一深度。

即使这样，该收藏中的很多艺术家打破了传统的绘画模式和老套的绘画大师的风格。他们依然以风景作为主题，这是中国传统绘画的典型主题，使用中国传统的宣纸和中国的墨汁和毛笔。同样遵从构图的传统要素，徐龙森的风景画深受中国道家阴阳理念的影响，邀请静观者漫步在自然风景中。其他画家如陈向迅，遵循表现写意画的原则，忽视比例和视角。陈作画时使用厚重的水墨笔画，有时他的作品中的风景展现的十分狂野，往往是看不到天空的荒野、原始森林。几百年以前，这两种重要的绘画原则构成了画家的精神自由和创作力量。

本收藏的艺术品均由塑造了20世纪后期绘画风格的著名画家完成。在这一阶段，为了追求具有说服力的创造性，本性，个体性和自我性，画家进行了很多创作。如今，中国乃至世界各大展馆均展出这些画家的作品。这使得具有中国民族特色的中国实验艺术已经征服了国际艺术市场。

如需询问价格，作品清单及其他详情欢迎联系：

GALERIE RITTHALER 画廊
Mr. Albert Ritthaler 先生
Bartelsstraße 33
20357 Hamburg / Germany
 电话: +49 40 45 03 73 50
 邮件: info@ritthaler-galerie.de
 网页: www.ritthaler-galerie.de



Chen Xiangxun, p. 78 (Detail)
 陈向迅 第 页, 78 (细节)



Chen Xiangxun

*1956

陈向迅

Painting and Calligraphy, 1987

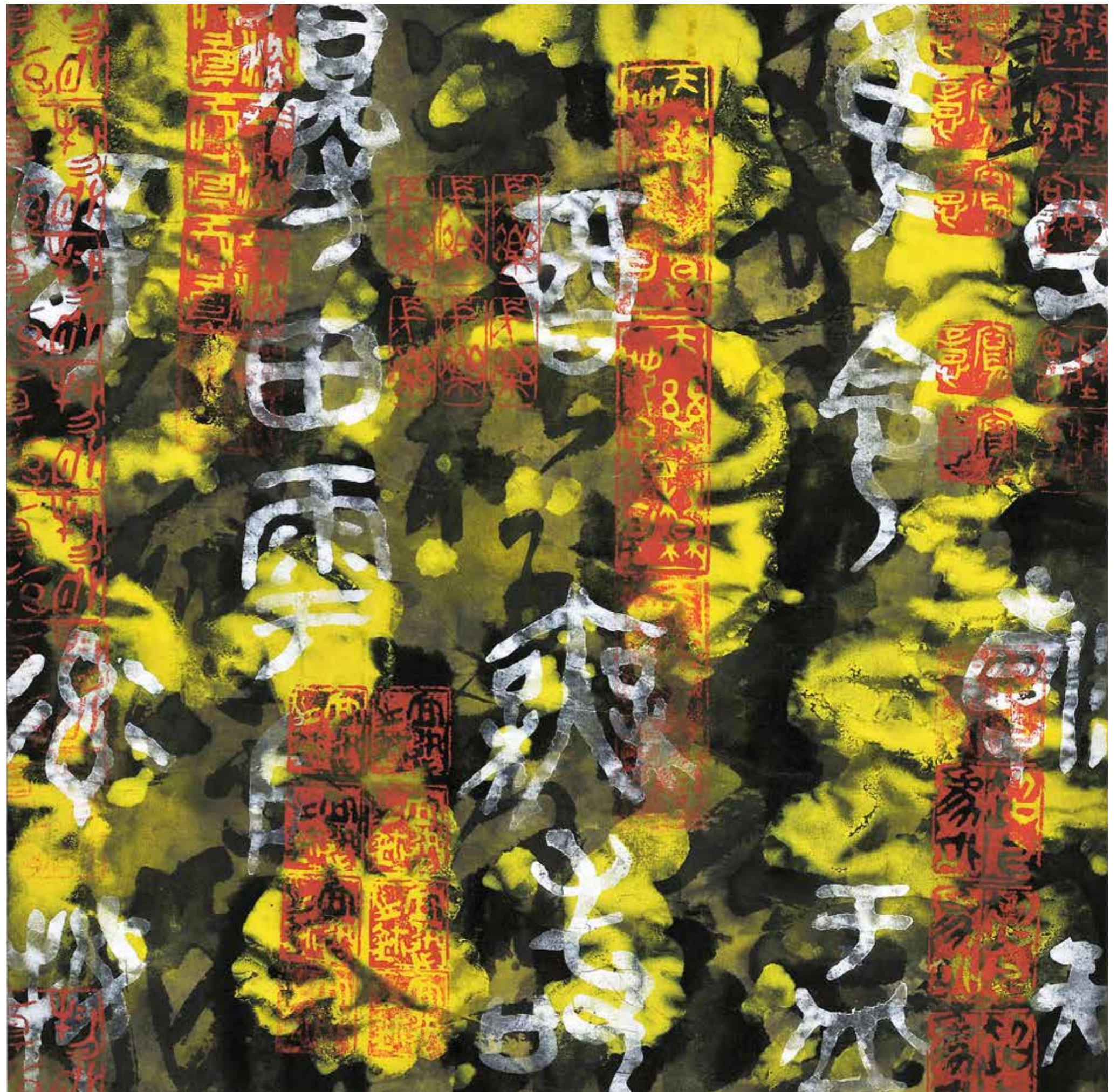
Ink and mineral colours on paper. 34 x 34 cm.
On the back inscribed in German: 'o.T.'
(untitled); dated '1987'.

字画。1987年

抽象构图(黑黄红)

纸面水墨和矿物性的颜料。34 x 34 cm

背面德文题识: o. T.1987



**Landscape 1988**

Ink and mineral colours on paper. 44 x 47 cm.
Lower right sealed 迁想妙得
(i.e. a traditional Chinese painting theory).
Upper left signed 向迅, sealed 陳向迅.
Inscription on the back: Chen Xiangxun.

风景。1988年

纸面水墨和矿物性的颜料。44 x 47 cm
右下角印章：迁想妙得
左上角签名：向迅，印章：陳向迅
背面签名：Chen Xiangxun

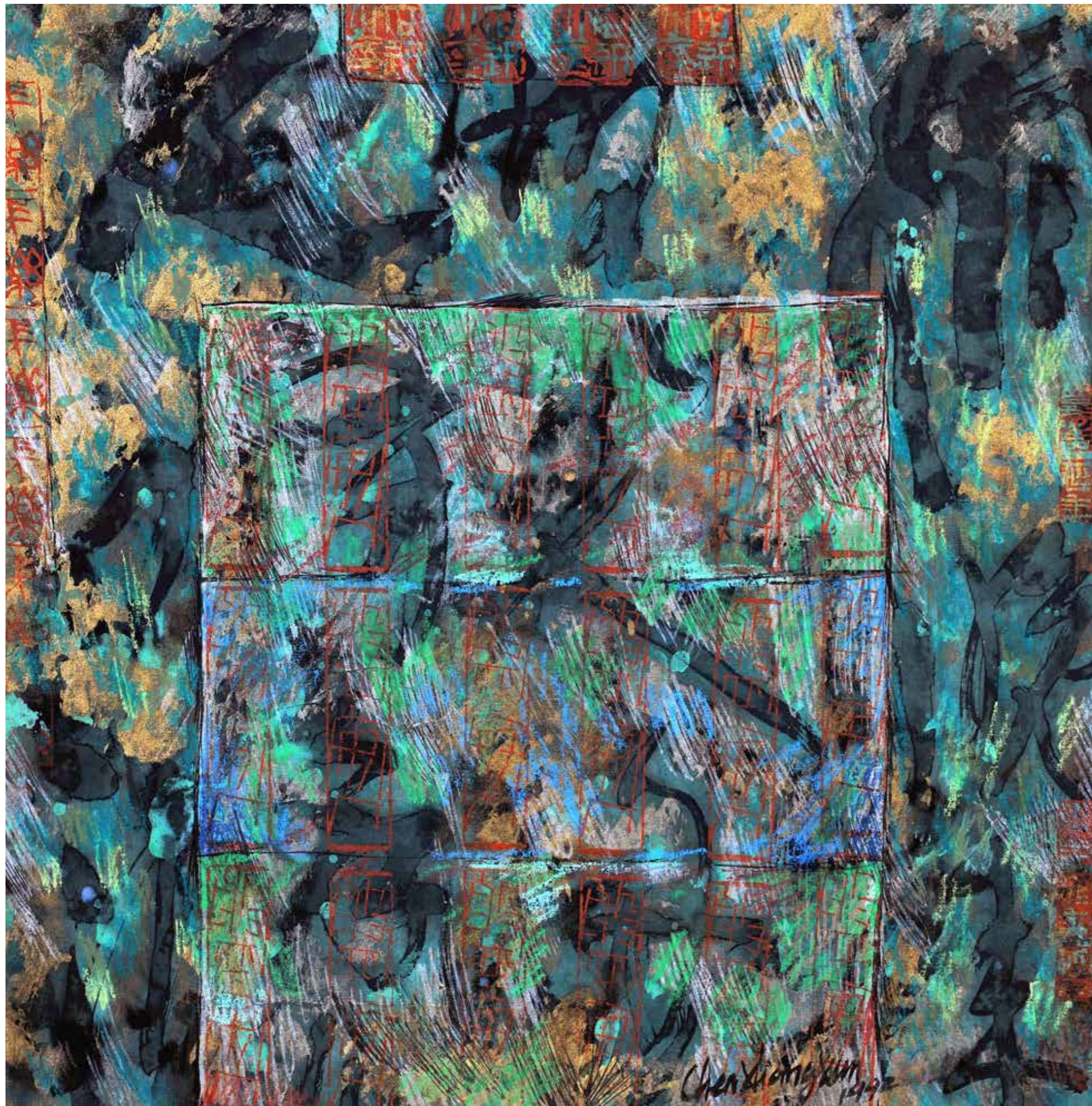
Flowers in a Vase, 1992

Ink and colour on paper. 65 x 65 cm
Lower right signed 'Chen Xiangxun'
dated '1992'; sealed

花瓶。1992年

纸面彩墨。65 x 65 cm
右下签名：Chen Xiangxun 1992；印章





Untitled, 1992

Ink and mixed media on paper. 34 x 34 cm.
Bottom right signed 'Chen Xiangxun'; dated '1992'.

无题。1992 年

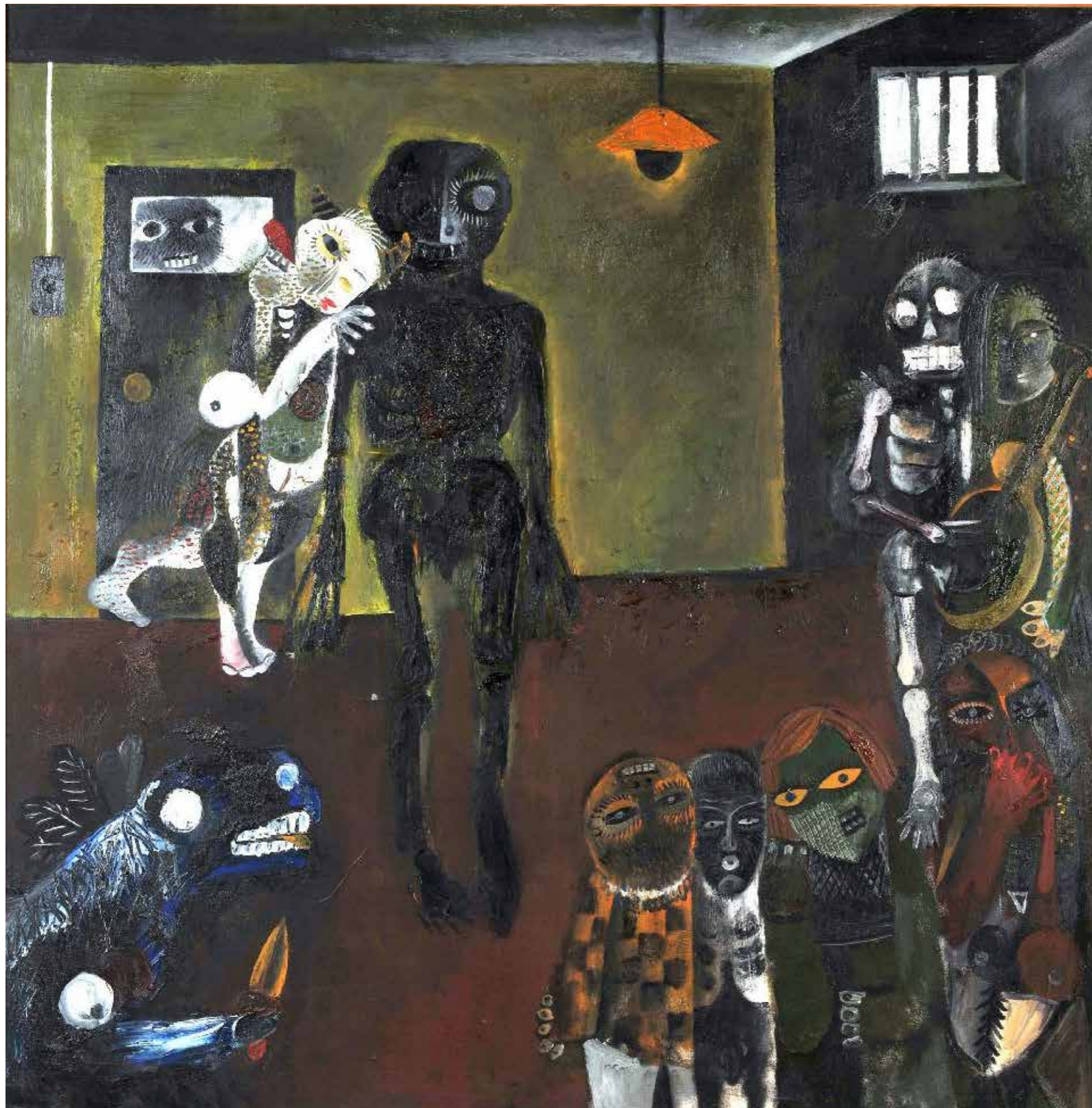
纸 面水墨、综合材料。 34 x 34 cm
右下角签名：Chen Xiangxun 1992

**Sun
Liang**

***1957**

孙良





Nightmare 1, 1987

Oil on canvas, framed. 110 x 110 cm

梦魇·1。1987年

布面油画，画框。110 x 110 cm

Flower, 1987

Ink and watercolour on paper. 50 x 45 cm.
On the right-hand side signed 孙良 and sealed;
dated 'December 1987'.

梦花。1987年

纸面水墨和水彩。50 x 45 cm
右边签名：1987年12月 孙良，印章





Untitled

Ink and colour on paper. 34 x 34 cm.
Lower left signed 孙良 and sealed.

无题

纸面彩墨。34 x 34 cm
左下角签名：孙良，印章

Rocky Mountain

Ink and colour on paper. 34 x 34 cm.
Top left signed and sealed 孙良.

岩石山

纸面彩墨。34 x 34 cm
左上角签名：孙良，印章：孙良





“In the Days Gone By”

Ink and colour on paper. 34 x 34 cm.
At the head an inscription, signed 孙良; two seals.

《昔日》

纸面彩墨。34 x 34 cm
上方题识，签名：孙良，两印章

Liang Quan

*1948

梁铨

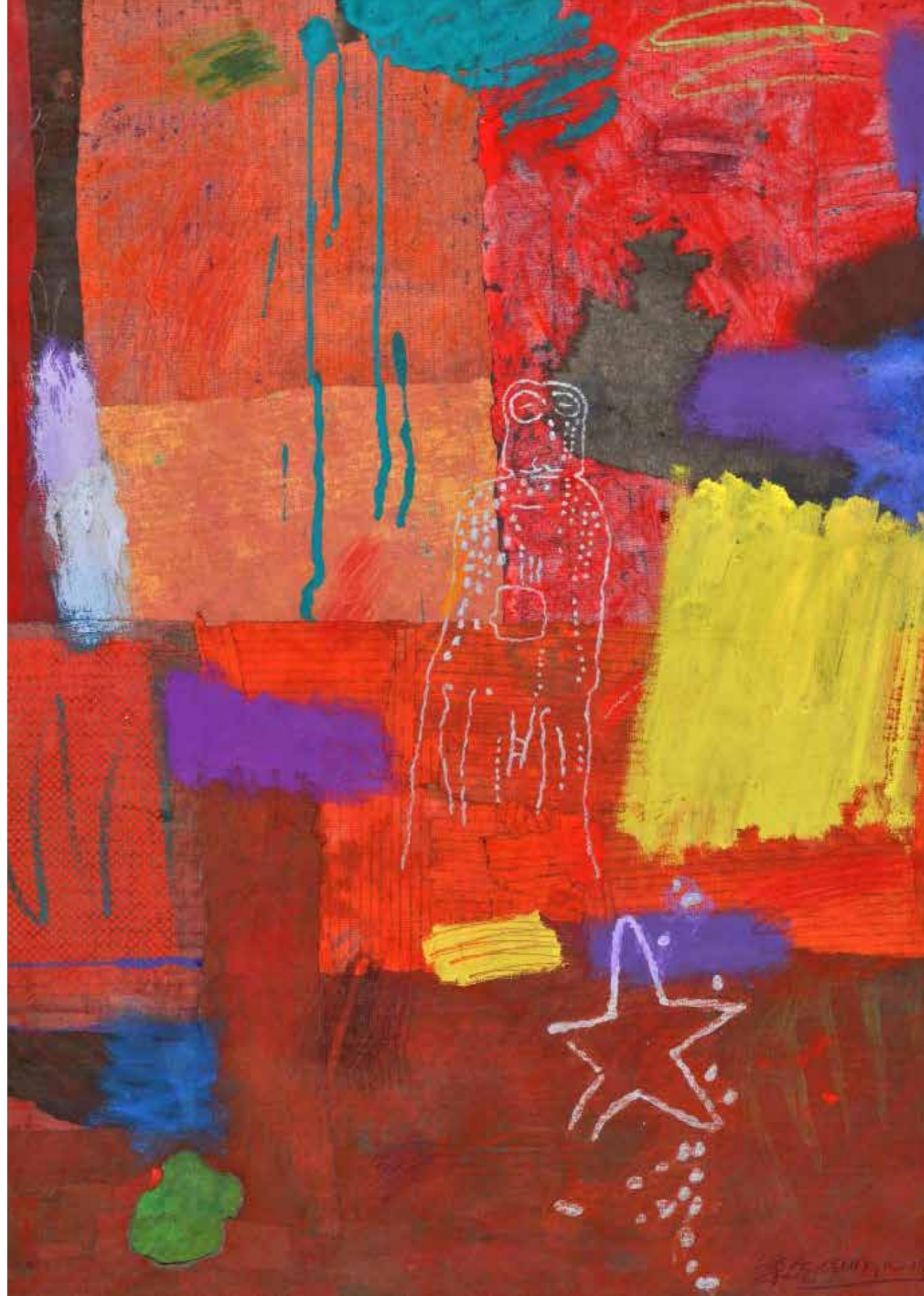


Octopus, 1988

Collage, mixed media on paper. 73 x 53 cm
Bottom right signed 梁铨 'LEUNG, C'; dated '88'

章鱼。1988 年

拼贴画，纸面综合材料。73 x 53 cm
右下角签名：梁铨 LEUNG, C '88





Hand, 1988

“Collage, mixed media on paper. 45 x 47 cm.
Bottom right signed 梁铨; dated '88'.

手。1988 年

拼贴画，纸面综合材料。45 x 47 cm
右下角签名：梁铨 88



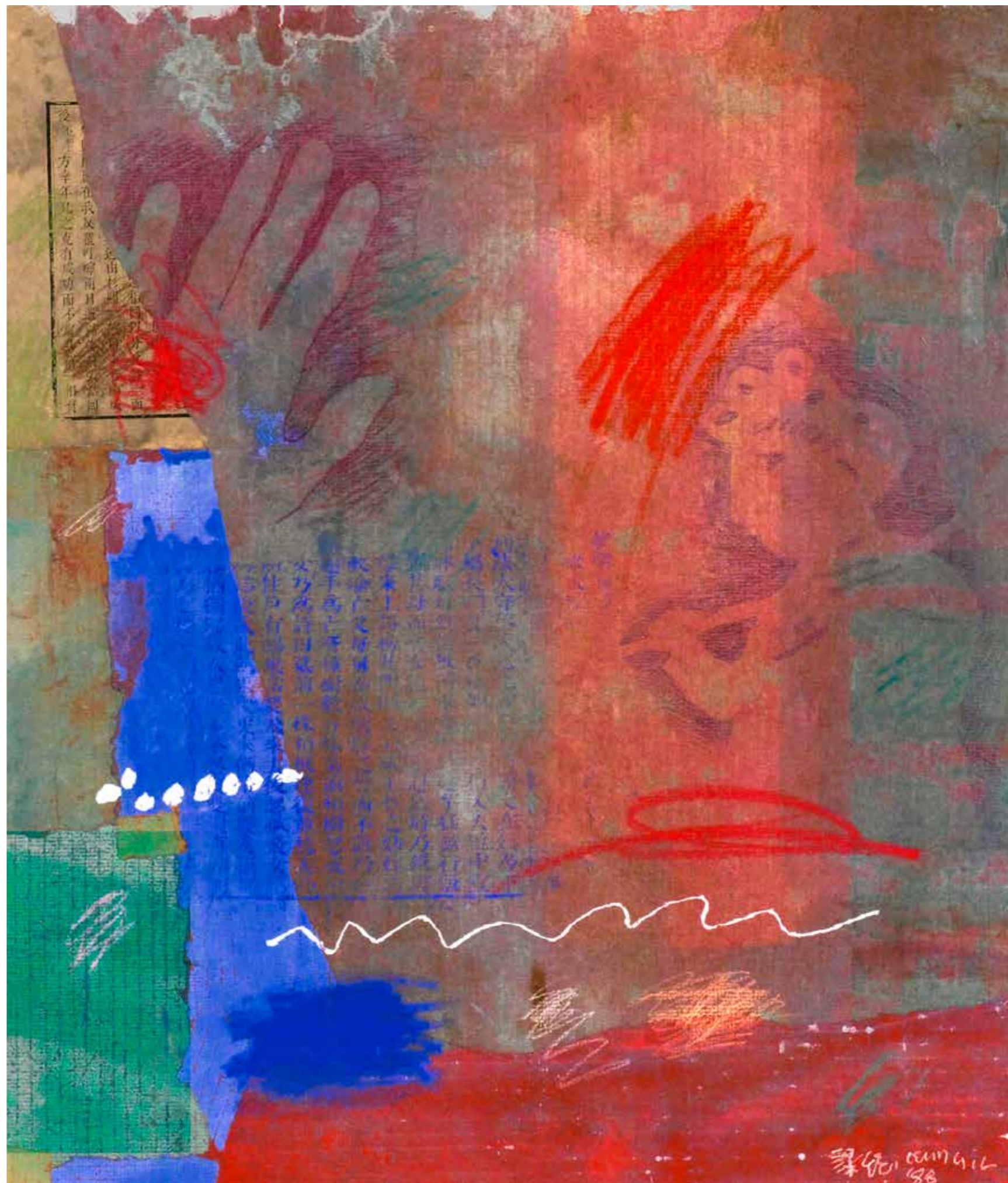
p. 38/39:
第 页, 38/39:

Untitled, 1988

Collage, mixed media on paper. 82 x 113 cm.
Bottom right signed 梁铨 and 'LEUNG, CHUAN';
dated ,88'.

无题。1988 年

拼贴画, 纸面综合材料 。82 x 113 cm
右下角签名: 梁铨 'LEUNG, Chuan' 88



Untitled, 1988

Collage, mixed media on paper. 50 x 43 cm.
Bottom right corner signed 梁铨 'LEUNG, C';
and dated ,88'.

无题。1988 年

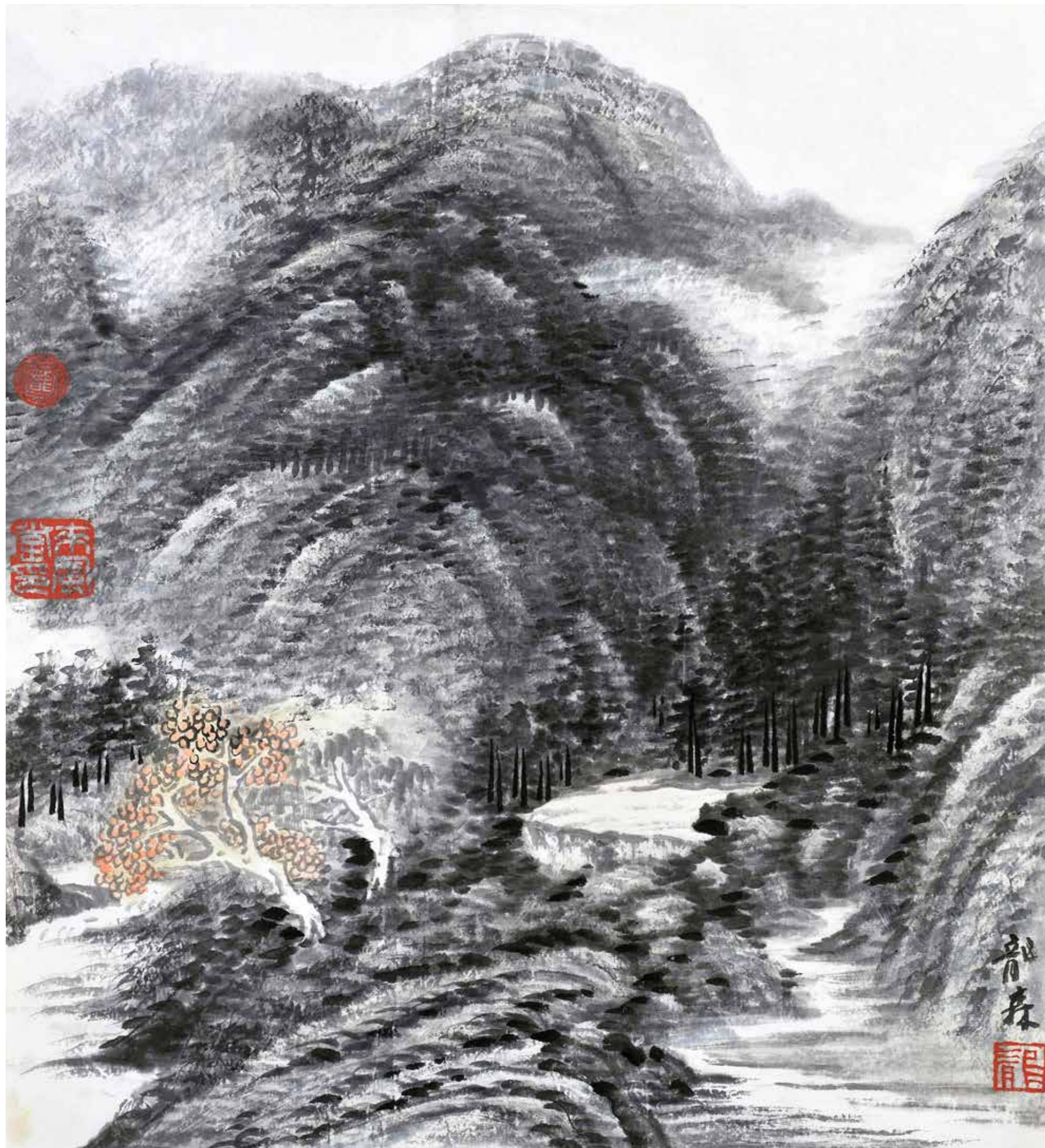
拼贴画, 纸面综合材料 。50 x 43 cm
右下角签名: 梁铨 LEUNG C 88

A traditional Chinese ink wash painting of a landscape. The scene depicts a river or stream flowing through a valley, with a prominent tree on the left bank. The background shows misty, layered mountains. The style uses varying ink tones and brushwork to create texture and depth.

Xu Longsen

*1953

徐龙森



Landscape, 1989

Ink on paper. 41 x 38 cm.

Lower right corner signed 龙森, sealed 龙.

Upper left sealed 龙, one white characters seal.

山水。1989年

纸面水墨。41 x 38 cm

右下角签名：龙森，印章：龙

左上角印章：龙，白文印章

**Landscape**

Ink on paper. 34 x 34 cm.
Lower right signed 龙森, sealed 龙.

山水

纸面水墨。34 x 34 cm
右下签名：龙森，白文印章，印章：龙



Landscape, 1989

Ink on paper. 34 x 34 cm.

On the left-hand side signed 龙森, sealed 龙.

山水。1989年

纸面水墨。34 x 34 cm

左边签名：龙森，印章：龙



Landscape, 1992

Ink on paper. 46 x 26 cm.

Lower left inscribed, signed 龙森, sealed 龙; dated 1992 (a ren-shen year of the Chinese calendar).

山水。1992年

纸面水墨。46 x 26 cm

左边题词：战退玉龙三百万 败鳞残甲满天飞。

签名：壬申三月 龙森，印章：龙 1992年

Li Shan

*1942

李山



Me and My City, 1985

Gouache and mixed media
on paper. 63 x 54 cm (sheet)

《我和我的城市》1985年
宣纸、水粉、综合材料
63 x 54 cm





**“Beginning of Spring
in Sichuan”, 1978**

Gouache on paper. 39 x 46 cm
Bottom right corner signed 李山;
dated ‘Shanghai 78’

On the back inscribed 四川春开
(Beginning of Spring in Sichuan) and
‘Shanghai Theatre Academy’;
signed 李山; dated 79.8.9.

《四川春开》1978 年

纸面水粉。39 x 46 cm
右下角签名：李山 上海 78
背面题识：四川春开、上海戏剧学院，
签名：李山79.8.9.



Sunset at Harbour, 1981

Gouache on paper. 54 x 64 cm.
Bottom right inscribed and signed 李山;
dated '81.9' in Chinese characters.

港口日落。1981年

纸面水粉。54 x 64 cm
右下角签名：李山、八一·九



Boats in Harbour

Gouache on paper. 54 x 64 cm.
Bottom left inscribed and signed 李山.

船在港口

纸面水粉。54 x 64 cm
左下角签名：李山

**Landscape, 1979**

Gouache on paper. 54 x 64 cm.
Bottom right signed 李山;
dated '79' Putuoshan.

山水。1979年

纸面水粉。54 x 64 cm
右下角签名：李山 79 普陀山



**Gu
Liming**

***1963**

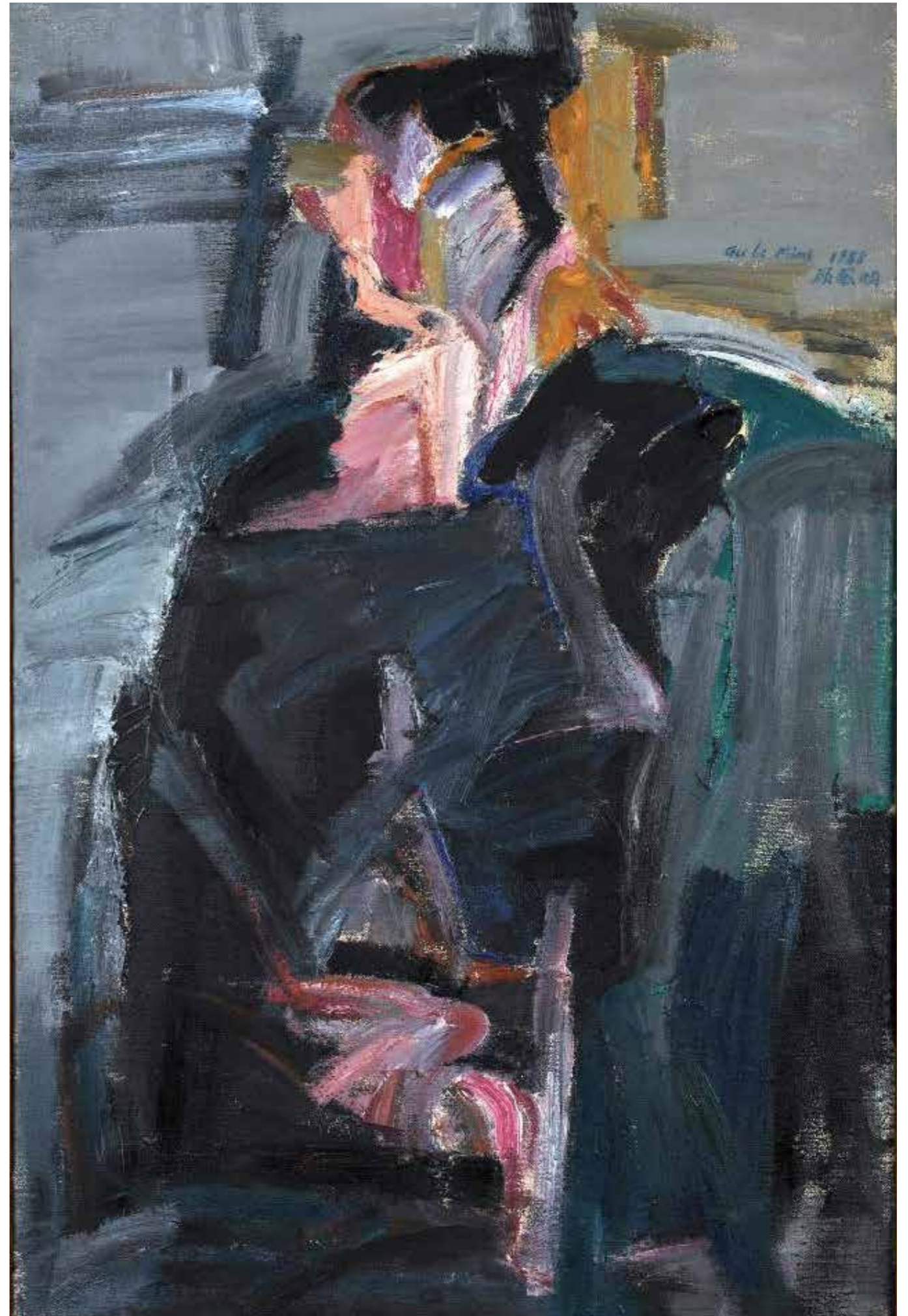
顾黎明

Female Nude, 1988

Oil on canvas. 116 x 75 cm
Upper right signed 'Gu Li Ming' and 顾黎明;
dated '1988'

女裸体。1988 年

布面油画。116 x 75 cm
右上方签名：Gu Li Ming及1988顾黎明





Red Temptation, 1987

Oil on canvas. 112 x 86 cm.

Lower right signed and dated 'Gu Li Ming 1987'

红色的诱惑。1987 年

布面油画。112 x 86 cm

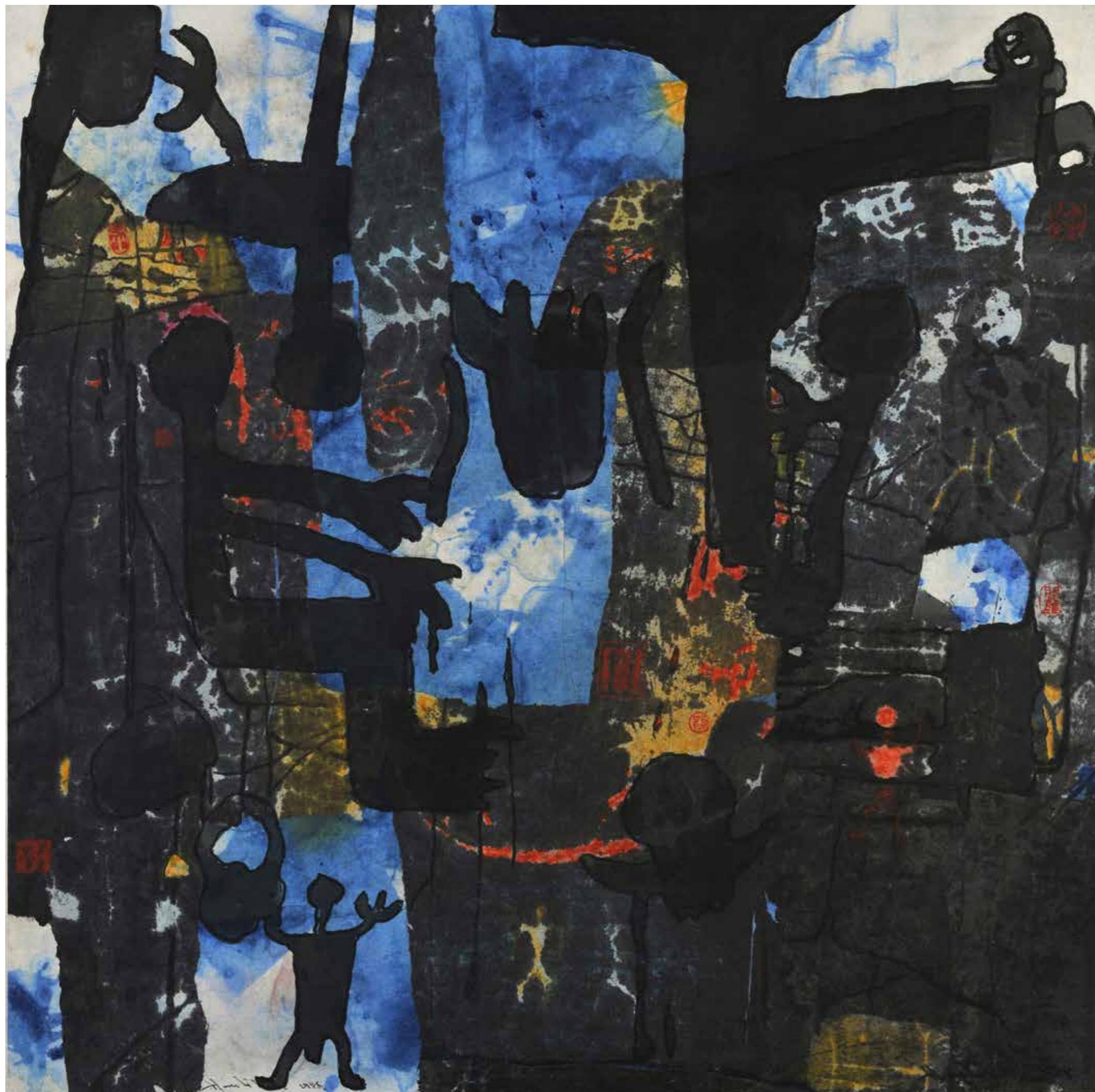
右下角签名：Gu Li Ming 1987 顾黎明

Han Likun

*1938

韩黎坤



**Miro, 1988**

Collage. 68 x 68 cm

On the right-hand side two seals

On the left-hand side two seals

Bottom left signed 'Han Likun 1988'

Bottom right corner signed 'Han Likun 1988'

Miro . 1988年

拼贴画。 68 x 68 cm

右边两印章

左边两印章

左下签名: Han Likun 1988

右下角签名: Han Likun 1988

Untitled, 1988

Collage with pieces of newspaper. 64 x 65 cm
 Upper right sealed
 Lower left sealed 韩, underneath two more seals
 Bottom left signed 'Han Likun'; dated '1988 in
 Hangzhou'

无题。1988年

综合材料和 报纸, 拼贴画。 64 x 65 cm
 右上方印章
 左下方印章: 韩, 此外两印章
 左下签名: Han Likun 1988 在杭州





Untitled, 1988

Mixed media collage. 65 x 66 cm
Bottom left signed 'Han Likun';
dated '1988 Hangzhou'

无题。1988年

综合材料，拼贴画。65 x 66 cm
左下签名：Han Likun 1988 杭州

Catalog

OF ALL 66 WORKS

66 幅作品目录

PRICE UPON REQUEST

价格敬请垂询

Chen Xiangxun

*1956

陈向迅



Landscape 1988

Ink and mineral colours on paper. 44 x 47 cm.
Lower right sealed 迁想妙得
(i.e. a traditional Chinese painting theory).
Upper left signed 向迅, sealed 陈向迅.
Inscription on the back: Chen Xiangxun.

风景。1988年

纸 面水墨和矿物性的颜料。44 x 47 cm
右下角印章：迁想妙得
左上角签名：向迅，印章：陈向迅
背面签名：Chen Xiangxun



Landscape 1989

Ink and mineral colours on paper. 45 x 46 cm
Three seals
Signed CHEN xiangxun and 向迅

风景1989年

纸 面水墨和矿物性的颜料。45 x 46 cm
三印章
签名：CHEN xiangxun, 向迅



Landscape 1983

Ink and mineral colours on paper. 67 x 68 cm
Three inscriptions
Five seals
Signed CHEN

风景 1983年

纸 面水墨和矿物性的颜料。67 x 68 cm
题识
五印章
签名：CHEN



Landscape

Ink and colour. 69 x 69 cm
Inscriptions
Two seals
Signed 向迅

风景

彩墨。69 x 69 cm
题识
两印章
签名：向迅



Landscape 1988

Ink and colour. 47 x 44 cm
Three seals
Signed 向迅 and Chen Xiangxun
German inscription on the back: Landschaft;
dated 1988

陈向迅 (1956 -)

风景 1988 年
彩墨。 47 x 44 cm
三印章
签名: 向迅, Chen Xiangxun
背面德文题识: Landschaft 1988



"Qu Zi walking and chanting", 1987

Ink. 68 x 69 cm
Inscription
Three seals
Inscription on the back 《屈子行吟》;
dated 1987

《屈子行吟》 1987 年

水墨。 68 x 69 cm
题识
三印章
背面题识: 《屈子行吟》 1987



Flowers in a Vase, 1992

Ink and colour on paper. 65 x 65 cm
Lower right signed 'Chen Xiangxun';
dated '1992';
sealed

花瓶。 1992 年

纸面彩墨。 65 x 65 cm
右下签名: Chen Xiangxun 1992; 印章



"Mountains in the Rain", 1988

Ink on paper. 68 x 68 cm.
Inscriptions, signed 向迅, and sealed 陈向迅.
Lower right corner sealed.
On the back inscribed in German and Chinese:
'Chen Xiangxun Berge im Regen' 《山雨》;
dated '1988'.

《山雨》 1988 年

纸面水墨。 68 x 68 cm
上面题词, 签名: 向迅, 印章: 陈向迅
右下角朱文印章
背面德文和中文题识: Chen Xiangxun
Berge im Regen 88 《山雨》 1988

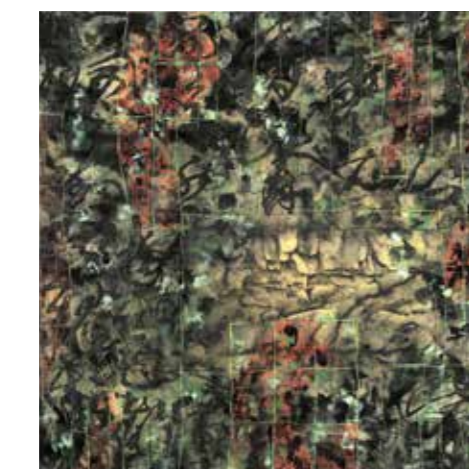


Untitled, 1992

Ink and mixed media on paper. 34 x 34 cm.
Bottom right signed 'Chen Xiangxun';
dated '1992'.

无题。 1992 年

纸面水墨、综合材料。 34 x 34 cm
右下角签名: Chen Xiangxun 1992



Untitled. Abstract composition, 1991

Mixed media. 50 x 48 cm
Signed Chen Xiangxun;
dated 1991

抽象构图。 1991年

综合材料。 50 x 48 cm
签名: Chen Xiangxun 1991



Landscape

Ink and mineral colours on paper. 68 x 68 cm
Inscriptions
Two seals

风景

纸面水墨和矿物性的颜料。 68 x 68 cm
题识
两印章



Landscape

Inscription
Ink and mineral colours on paper. 68 x 68 cm
Signed Xiangxun
Two seals

风景

题识
纸面水墨和矿物性的颜料。 68 x 68 cm
两印章
签名: Xiangxun



Landscape

Ink and mineral colours on paper. 67 x 67 cm
Inscription in the top right-hand corner
Two seals
Signed 向迅 and at bottom right: xiangxun

风景

纸面水墨和矿物性的颜料。 67 x 67 cm
右上角题识
两印章
签名：向迅及右下 xiangxun



Painting and Calligraphy, 1987

Ink and mineral colours on paper. 34 x 34 cm.
On the back inscribed in German: 'o.T.'
(untitled); dated '1987'.

字画。1987年

抽象构图(黑黄红)
纸面水墨和矿物性的颜料。 34 x 34 cm
背面德文题识： o. T.1987

Sun Liang

*1957

孙良



Flower, 1987

Ink and watercolour on paper. 50 x 45 cm.
On the right-hand side signed 孙良 and sealed;
dated 'December 1987'.

花。1987年

纸面水墨和水彩。50 x 45 cm
右边签名：1987年12月 孙良，印章



"Scenery of Xiangxi"

Ink and colour on paper. 34 x 46 cm.
Upper right an inscription, signed 孙良;
three seals. Lower left sealed with a turtle.

《湘西小景》

纸面彩墨。34 x 46 cm
右上角题识、签名孙良、三印章
左下角龟印章



"In the Days Gone By"

Ink and colour on paper. 34 x 34 cm.
At the head an inscription, signed 孙良;
two seals.

《昔日》

纸面彩墨。34 x 34 cm
上方题识，签名：孙良，两印章



Untitled

Ink and colour on paper. 34 x 34 cm.
Lower left signed 孙良 and sealed.

无题

纸面彩墨。34 x 34 cm
左下角签名：孙良，印章



"Bada Shanren"

Ink on paper. 34 x 46 cm.
Upper left corner inscribed,
signed and sealed 孙良.

《八大山人》

纸面水墨。34 x 46 cm
左上角题识，签名：孙良，印章：孙良



Rocky Mountain

Ink and colour on paper. 34 x 34 cm.
Top left signed and sealed 孙良.

岩石山

纸面彩墨。34 x 34 cm
左上角签名：孙良，印章：孙良



Nightmare 1, 1987

Oil on canvas, framed. 110 x 110 cm

梦魇·1。1987年

布面油画，画框。110 x 110 cm

Liang Quan

*1948

梁铨



Untitled, 1988

Collage, mixed media on paper. 82 x 113 cm.
Bottom right signed 梁铨
and 'LEUNG, CHUAN';
dated '88.

无题。1988 年

拼贴画，纸面综合材料 82 x 113 cm
右下角签名：梁铨 'LEUNG, Chuan' 88'



Untitled, 1988

Collage, mixed media on paper. 46 x 47 cm.
Bottom right signed 梁铨 and 'LEUNG C';
dated '88.

无题。1988 年

拼贴画，纸面综合材料。46 x 47 cm
右下角签名：梁铨及 'LEUNG C' 88



Hand, 1988

Collage, mixed media on paper. 45 x 47 cm.
Bottom right signed 梁铨;
dated '88.

手。1988 年

拼贴画，纸面综合材料。45 x 47 cm
右下角签名：梁铨 '88



Hand and Halftone Dots, 1988

Collage, mixed media on paper. 50 x 47 cm.
Bottom right signed 梁铨 and 'LEUNG C';
dated '88.

手与像素。1988 年

拼贴画，纸面综合材料。50 x 47 cm
右下角签名：梁铨及 'LEUNG C' '88



Octopus, 1988
Collage, mixed media on paper. 73 x 53 cm
Bottom right signed 梁铨 'LEUNG, C';
dated '88

章鱼。1988 年
拼贴画，纸面综合材料。73 x 53 cm
右下角签名：梁铨 LEUNG, C '88



Untitled, 1988
Collage, mixed media on paper. 50 x 43 cm.
Bottom right corner signed 梁铨 'LEUNG, C';
dated '88.

无题。1988 年
拼贴画，纸面综合材料。50 x 43 cm
右下角签名：梁铨 LEUNG C '88



Untitled, 1989
Collage, mixed media on paper. 54 x 67 cm
Bottom right signed 梁铨 'LEUNG, C';
dated '89

无题。1989 年
拼贴画，纸面综合材料。54 x 67 cm
右下角签名：梁铨 LEUNG, C '89



Untitled, 1989
Collage, mixed media on paper. 35 x 40 cm
Bottom right signed 梁铨 'LEUNG, C';
dated '89

无题。1989 年
拼贴画，纸面综合材料。35 x 40 cm
右下角签名：梁铨 LEUNG, C '89



"The German Connoisseur", 1991
Collage, mixed media on paper. 35 x 40 cm
On the back a dedication signed 梁铨 and
'LEUNG, CHUAN'; inscribed 《德国行家》
(The German Connoisseur);
dated 30 June '91

《德国行家》1991 年
拼贴画，纸面综合材料。35 x 40 cm
右下签名：《德国行家》，一九九一年六月三十日题词，签名：梁铨、

Xu Longsen

*1953

徐龙森



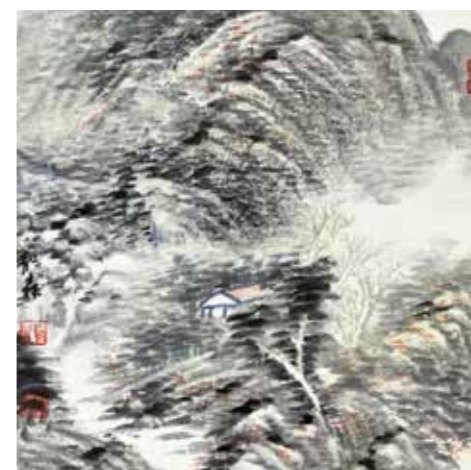
Landscape, circa 1989
Ink on paper. 38 x 41 cm
Lower right a dragon seal and a white characters seal
Bottom left corner sealed

山水。1989年前后
纸面水墨。38 x 41 cm
右下方龙纹印章 和白文印章
左下角印章



Landscape, 1989
Ink on paper. 34 x 34 cm.
On the left-hand side signed 龙森, sealed 龙.

山水。1989年
纸面水墨。34 x 34 cm
左边签名：龙森，印章：龙



Landscape, 1989
Ink on paper. 34 x 34 cm.
Upper right corner sealed.
Lower left corner signed 龙森 and sealed 龙;
one white characters seal

山水。1989年
纸面水墨。34 x 34 cm
右上角白纹印章
左边签名：龙森，印章：龙，白文印章



"Clear Spring Water Flowing over Rocks", 1992
Ink on paper. 34 x 34 cm
On the right-hand side inscribed 清泉石上流
(Clear spring water flowing over rocks); signed 龍森;
dated '1992, third month' (a ren-shen year of the Chinese calendar)
On the left-hand side a white characters seal

《清泉石上流》1992年
纸面水墨。34 x 34 cm
右边题识：清泉石上流，签名：壬申三月龙森，
印章：龙
龍森，印章：龍
左边白文印章



Landscape

Ink on paper. 34 x 34 cm.
On the right-hand side signed 龙森, sealed 龙.

山水

纸面水墨。34 x 34 cm
右边签名：龙森，印章：龙



Landscape

Ink on paper. 34 x 34 cm. Lower right signed 龙森, sealed 龙.

山水

纸面水墨。34 x 34 cm
右下签名：龙森，印章：龙

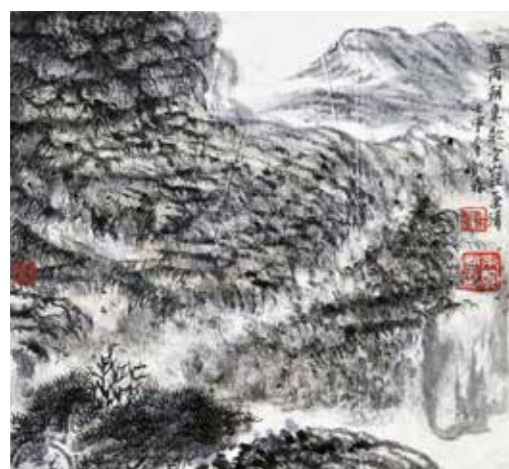


Landscape, 1989

Ink on paper. 41 x 38 cm.
Lower right corner signed 龙森, sealed 龙.
Upper left sealed 龙, one white characters seal.

山水。1989年

纸面水墨。41 x 38 cm
右下角签名：龙森，印章：龙
左上角印章：龙，白文印章



Landscape, 1992

Ink on paper. 34 x 37 cm.
Upper right inscribed with a Tang poem, signed 龙森, sealed 龙; one white characters seal; dated 1992 (a ren-shen year of the Chinese calendar).
On the left-hand side sealed 龙.

山水。1992年

纸面水墨。34 x 37 cm
右边题词：宿雨朝来歇空山天气清。签名：壬申年龙森，印章：龙，白文印章，1992年
左边印章：龙



Landscape

Ink on paper. 46 x 26 cm.
Upper left signed 龙森, sealed 龙.
Lower left sealed 龙.

山水

纸面水墨。46 x 26 cm
左上角签名：龙森，印章：龙
左下角印章：龙



Landscape, 1992

Ink on paper. 46 x 26 cm.
Lower left inscribed, signed 龙森, sealed 龙; dated 1992 (a ren-shen year of the Chinese calendar).

山水。1992年

纸面水墨。46 x 26 cm
左边题词：战退玉龙三百万 败鳞残甲满天飞。
签名：壬申三月 龙森，印章：龙，1992年



Landscape, 1992

Ink on paper. 46 x 26 cm.
On the right-hand side inscribed, signed 龙森, sealed 龙;
dated 1992 (a ren-shen year of the Chinese calendar).

山水。1992年

纸面水墨。46 x 26 cm
右边题词，签名：壬申三月 龙森，印章：龙，1992年



Landscape

Ink on paper. 46 x 26 cm.
On the left-hand side inscribed, signed 龙森, sealed 龙.

山水

纸面水墨。46 x 26 cm
左边题词，签名：龙森，印章：龙



Evening Rain, 1992

Ink and water colours on paper. 48 x 28 cm
Lower right repeatedly sealed with red character 龍 and white characters seals
Upper left sealed with red character 龍
Lower left inscription signed 龍森; sealed 龍; dated 1992, third month (a ren-shen year of the Chinese calendar)

夜雨。1992年

纸面彩墨。48 x 28 cm
右下方多次的朱文印章和白文印章：龍
左上方朱文印章：龍
左下方题识，签名：壬申三月龍森，印章：龍，1992年



Landscape, 1989

Ink and water colours on paper. 48 x 28 cm
Lower right sealed 龍
On the left-hand side signed 龍森 and sealed

风景。1989

纸面彩墨。48 x 28 cm
右下方印章：龍
左边签名：龍森，印章

Li Shan

*1942

李山

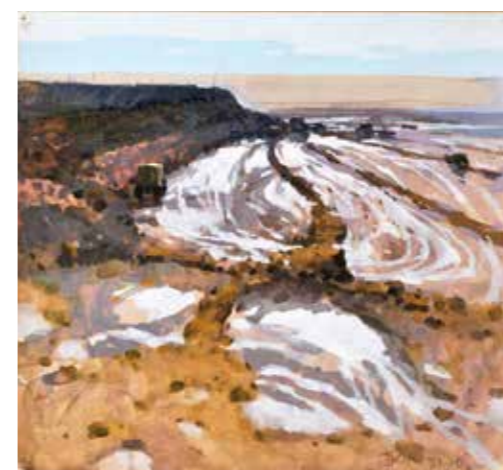


Ships on the Sea, 1976

Gouache, mixed media on thick paper.
36 x 40 cm
Lower right signed 李山; dated 'Shanghai 76'
On the reverse: Mansion
Gouache
Inscribed '275' in pencil
(collector's inventory number)

海上船。1976年

纸面水粉和综合材料。36 x 40 cm
右下签名：李山 上海 76
背面 别墅
纸面水粉
搜集者用铅笔写在作品背面：275



Spring Landscape with Snow, 1973

Gouache and mixed media on paper.
36 x 39 cm.
Lower left corner signed 李山; dated 73.10.
On the back signed 李山.

有白雪的春天。1973年

纸面水粉和综合材料。36 x 39 cm
左下角签名：李山73.10
背面签名：李山



"Sailing", 1976

Gouache on paper. 54 x 64 cm.
Upper right quarter inscribed 东海 (East China Sea); signed 李山; dated 1976.6.
On the reverse: on the left a sketch, on the right inscribed 《出海》 (Sailing); signed 李山.

《出海》1976年

纸面水粉。54 x 64 cm
右上角款识：东海，签名：李山1976.6
背面右边题识：《出海》，签名：李山 上海戏剧学院。右下角搜集者用铅笔背面写数字：398
背面左边水粉素描画



Sunset at Harbour, 1981

Gouache on paper. 54 x 64 cm.
Bottom right inscribed and signed 李山;
dated 81.9 in Chinese characters.

港口日落。1981年

纸面水粉。54 x 64 cm
右下角签名：李山、八一·九



Boats in Harbour
Gouache on paper. 54 x 64 cm.
Bottom left inscribed and signed 李山.

船在港口
纸面水粉。54 x 64 cm
左下角签名：李山



"Spring", 1978
Gouache on paper. 54 x 64 cm
Bottom signed 李山;
dated '78

《春》1978年
纸面水粉。54 x 64 cm
下边签名：李山78年



Landscape, 1979
Gouache on paper. 54 x 64 cm.
Bottom right signed 李山;
dated '79 Putuoshan.

山水。1979年
纸面水粉。54 x 64 cm
右下角签名：李山 79 普陀山



"Bay", 1981
Gouache on thick paper. 54 x 64 cm
Lower right signed 李山; dated 'Putuoshan 81'
Upper right inscribed 海湾 (bay) in ballpoint pen; signed 李山, 'Shanghai Theatre Academy'
On the reverse: Landscape with Flying Ducks Gouache; Inscribed '403' in pencil (collector's inventory number)

《海湾》1981 年
纸面水粉。54 x 64 cm
右下签名：李山；普陀山81
右上用圆珠笔签名：海湾，李山，上海戏剧学院
背面：飞鸭
纸面水粉
搜集者用铅笔写在作品背面：403



Street Scene, 1981
Gouache on paper. 54 x 64 cm
Lower right signed 李山; dated 'Putuoshan 81'.

街道景象。1981 年
纸面水粉。54 x 64 cm
右下签名：李山 普陀山 '81



Landscape with White Houses, 1979
Gouache on paper. 54 x 64 cm
Lower right signed 李山;
dated 'Putuoshan 79'.

白色房屋。1979 年
纸面水粉。54 x 64 cm
右下签名：李山 普陀山 '79.



"Beginning of Spring in Sichuan", 1978
Gouache on paper. 39 x 46 cm
Bottom right corner signed 李山;
dated 'Shanghai 78'
On the back inscribed 四川春开 (Beginning of Spring in Sichuan) and 'Shanghai Theatre Academy'; signed 李山;
dated 79.8.9.

《四川春开》1978 年
纸面水粉。39 x 46 cm
右下角签名：李山 上海 78
背面题识：四川春开、上海戏剧学院，签名：李山79.8.9.



„The Region of Fengjie in Sichuan", 1978
Gouache on paper. 40 x 46 cm
Bottom right signed 李山; dated 'Shanghai 78'
On the back inscribed 四川奉节 (Sichuan Fengjie)

《四川奉节》1978 年
纸面水粉。40 x 46 cm
右下签名：李山 上海 78
背面题识：四川奉节



"Small Town near Wu Mountain", 1978

Gouache on paper. 40 x 46 cm
Bottom right signed 李山; dated 'Shanghai 78'
On the back inscribed 四川《巫山小城》
(Sichuan. Small town near Wu Mountain);
signed 李山, 'Shanghai Theatre Academy';
dated 1978

《巫山小城》1978 年

纸面水粉。40 x 46 cm
右下签名：李山 上海1978
背面 题识：四川《巫山小城》，签名：李
山 上海戏剧学院，1978年



Boats in a Bay, 1978

Gouache. 40 x 46 cm.
Bottom right corner signed 李山 ;
dated 'Shanghai 78'.
On the back inscribed with Chinese characters.

《海湾里的小船》1978年

纸面水粉。40 x 46 cm
右下角签名：李山上海78
背面用中文进行了描述



People in a Park, 1978

Gouache on paper. 40 x 46 cm.
Lower right signed 李山; dated 'Shanghai '78'
On the reverse: Landscape (study).
Inscribed '414' in pencil
(collector's inventory number).

人们在公园里。1978 年

纸面水粉。40 x 46 cm
右下角签名：李山 上海78
背面山水画（素描）
搜集者用铅笔背面写数字：414



Village Landscape, 1978

Gouache on paper. 40 x 46 cm.
Bottom right corner signed 李山;
dated 'Shanghai 78'.

田园风光。1978年

纸面水粉。40 x 46 cm
右下角签名：李山 上海78



Me and My City, 1985

Gouache and mixed media
on paper. 63 x 54 cm (sheet)

《我和我的城市》1985年

宣纸、水粉、综合材料
63 x 54 cm

Gu Liming

*1963

顾黎明



Red Temptation, 1987
Oil on canvas. 112 x 86 cm.
Lower right signed and dated 'Gu Li Ming
1987'

红色的诱惑。1987 年
布面油画。112 x 86 cm
右下角签名：Gu Li Ming 1987顾黎明



Female Nude, 1988
Oil on canvas. 116 x 75 cm
Upper right signed 'Gu Li Ming' and 顾黎明;
dated 1988

女裸体。1988 年
布面油画。116 x 75 cm
右上方签名：Gu Li Ming及1988顾黎明

Han Likun

*1938

韩黎坤



Miro, 1988

Collage. 68 x 68 cm

On the right-hand side two seals

On the left-hand side two seals

Bottom left signed 'Han Likun 1988'

Bottom right corner signed 'Han Likun 1988'

Miro 。1988年

拼贴画。68 x 68 cm

右边两印章

左边两印章

左下签名：Han Likun 1988

右下角签名：Han Likun 1988



Untitled, 1988

Mixed media collage. 65 x 66 cm

Bottom left signed 'Han Likun';

dated 1988 Hangzhou

无题。1988年

综合材料，拼贴画。65 x 66 cm

左下签名：Han Likun 1988 杭州



Untitled, 1988

Collage with pieces of newspaper. 64 x 65 cm

Upper right sealed

Lower left sealed 韩, underneath two more seals

Bottom left signed 'Han Likun';

dated 1988 in Hangzhou

无题。1988年

综合材料和 报纸，拼贴画。64 x 65 cm

右上方印章

左下方印章：韩，此外两印章

左下签名：Han Likun 1988 在杭州

IMPRINT

版权标记

106

GALERIE RITTHALER 画廊
Mr. Albert Ritthaler 先生
Bartelsstraße 33
20357 Hamburg / Germany

电话: +49 40 45 03 73 50
邮件: info@ritthaler-galerie.de
网页: www.ritthaler-galerie.de

Text 撰稿人
Dr. Athina Chadzis

Translation 翻译
Liu Chang (Text) 刘畅 (文章)
Dr. Susanne Schäffler-Gerken (Legends) (图例)

Photos 摄影
Wolfgang Krüger, Hamburg

Layout 排版
J4 Studio.com, Hamburg

Print 印刷
Fritsch Druck GmbH, Leipzig

© All rights reserved. Hamburg 2015
保留所有版权, 汉堡 2015

Back cover:
Chen Xiangxun, p. 78, (Detail)
封底: 陈向迅, 第页, 78 (细节)



GALERIE RITTHALER 画廊

Mr. Albert Ritthaler 先生

Bartelsstraße 33

20357 Hamburg / Germany

电话: **+49 40 45 03 73 50**

邮件: **info@ritthaler-galerie.de**

网页: **www.ritthaler-galerie.de**

後不孝方幸年見之克有成功而不
所見我反覆叮嚀兩日遭歸
追由杉關
相國以分
用頁

追由杉關
相國以分
用頁

Chinese Contemporary Art

66 WORKS FROM AN IMPORTANT GERMAN COLLECTION

中国当代艺术
源自德国重要收藏的66幅作品

GALERIE RITTHALER

“Mountains in the Rain”, 1988

Ink on paper. 68 x 68 cm.

Inscriptions, signed 向迅, and sealed 陈向迅.

Lower right corner sealed.

On the back inscribed in German and Chinese:

‘Chen Xiangxun Berge im Regen’ 《山雨》;
dated ‘1988’.

《山雨》1988 年

纸 面水墨。68 x 68 cm

上面题词，签名：向迅，印章：陈向迅

右下角朱文印章

背面德文和中文题识：Chen Xiangxun

Berge im Regen 88 《山雨》1988

